



Parallel Flexiduct

Data Sheet

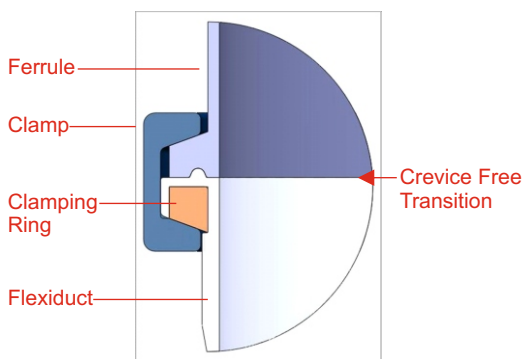
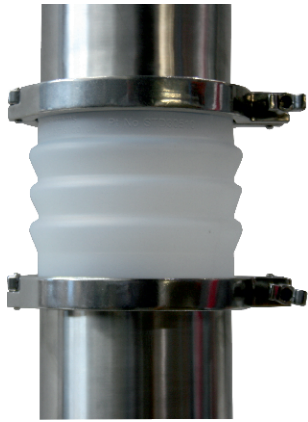


Fig.1 Quick release clamp

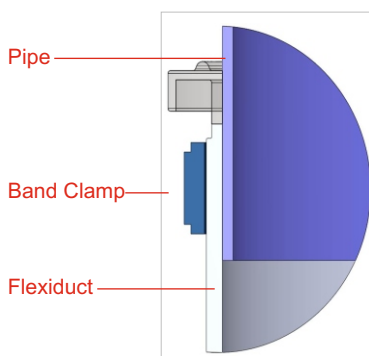


Fig.2 Lap Joint with Band Clamp

Parallel Flexiducts

Parallel Flexiducts have been developed as a part of a range of flexible connectors to make the joining of similar sized pipes simple. The ends are moulded to replace the gasket used in standard quick couplings and provide crevice free smooth transitions.

Dimensionally Tolerant

The ducts will compensate for reasonable levels of misalignment in all planes. The convolutions allow stretching & compression to allow the joints to be made easily.

Vibration

Absorbs vibrations and ideal for feeding vibrating equipment.

Weighing

Due to their flexibility the ducts are ideal for feeding applications to weighing systems.

Materials

Virgin translucent silicone rubber compliant to CFR(FDA) standard 177.2600 and USP class VI. Moulded in a class 100,000 clean room. (Certificate supplied with each duct)

Method of use

Ducts are clamped to adjacent flanges using standard clamps and a specially designed clamping ring. (See Fig. 1)

For non-flanged pipes the Flexiduct can be attached using a standard band clamp. (See Fig. 2)

Crevice Free Transition

When used with standard BS4825-3 ferrules there is a crevice free smooth transition from steel to duct leaving no gaps for powder retention to aid CIP cleaning.

Plain Ended Tubes

The Flexiducts are made so that it can be used with plain ended tubes using a band clamp to secure it to the tube.

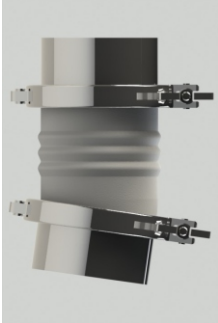
Connection Systems

4 - 5 Forge Mills Park, Station Road,
Coleshill, Warwickshire. U.K. B46 1JH

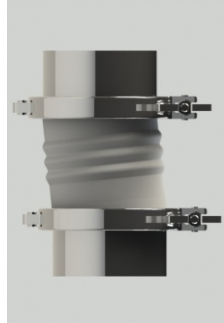
Tel: +44 (0)1675 469 030

www.connectionsystems.co.uk

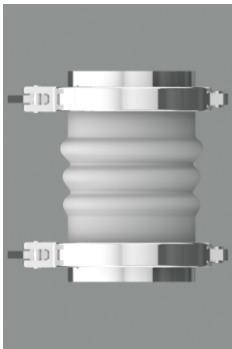
Connection Systems is a division of Terriva Ltd



Angular Misalignment



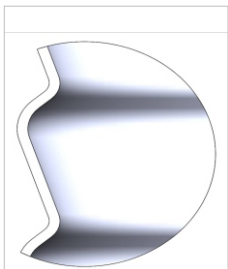
Vertical Misalignment



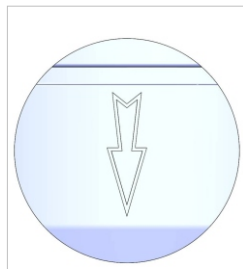
Compression



Elongation



Power Shedding



Flow Direction

Misalignment

The flexibility of the Flexiduct allows connections between misaligned items. The ducts have been designed to compensate for reasonable levels of misalignment in all planes. The convolutions allow the duct to be stretched, compressed and to cope with angular and vertical misalignments.

The inclusion of the convolutions makes it easy for operators to stretch or compress the seal to suit the positions of the flanges.

Pressure Rating

Flexiducts are designed to be used at atmospheric pressure.

Designed to shed Powder

Parallel Flexiducts have a right and wrong way for installation. The convolutions are asymmetric. One side has a steep angle to ensure that so that powder does not collect within the convolution. Arrows moulded into the surface define the flow direction.

Visible Powder flow

The powder flow within the duct is clearly visible due to the translucent material used for the ducts.

Blockage & Height sensing

Powder blockage or height can be checked using a capacitive sensor located outside the duct to eliminate product contact.

Rings

These rings offer extra support and stop the collapsing of the duct.

Compatibility

Flexiducts are designed to work with BS4825-3 fittings. They are also compatible with the following standards:

DIN32676 / ISO 1127 / ISO 2037 / ASME BPE / SMS 3008/3017

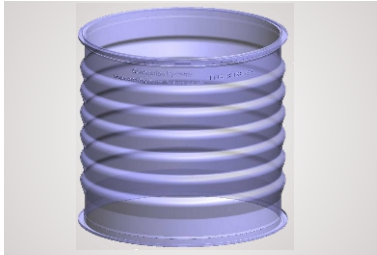
Connection Systems

4 - 5 Forge Mills Park, Station Road,
Coleshill, Warwickshire. U.K. B46 1JH

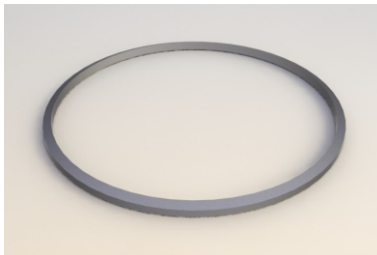
Tel: +44 (0)1675 469 030

www.connectionsystems.co.uk

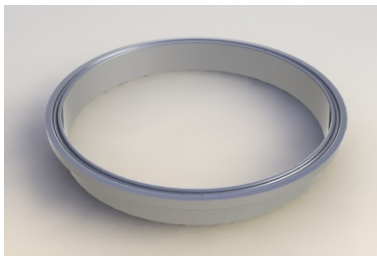
Connection Systems is a division of Terriva Ltd



Parallel Flexiduct



Clamping Rings



Ferrules



QR Clamps



Band Clamps

Components

Flexiducts

Please see size chart.

Ducts are clamped to adjacent flanges using standard clamps and a specifically designed clamping ring.

For non-flanged pipes the Flexiduct can be attached using a standard band clamp.

Ferrules

The ducts are designed to work with ferrules to standard BS4825 - Part 3. A ferrule will be required for the equipment to each side of the duct.

Clamping Rings

Made from grade 316 stainless steel the clamping ring is used behind the duct edge to provide the clamping surface.

QR Clamps

Standard Clamps - Single pin in grade 304 stainless steel. Confirm to BS4825 - Part 3.

Band Clamps

Our range of clamps are made from grade 304 stainless steel and incorporate an over-centre latch that can be secured in the closed position.

	Diameter					
	300	250	200	150	100	75
Part No.	31786	31785	31780	30510	31784	34615
Length	200	200	200	150	100	100
Clamp Part No.	F004586	F004585	F004584	F004583	F003427	F003426
Ferrule Part No.	F000044	F000043	F000042	F000039	F000031	F000027
Ferrule Length	35mm	35mm	28mm	21mm	21mm	21mm
Clamp Ring Part No.	32502	32501	32500	32499	32503	34199
Band Clamp Part No.	F003311	F003310	F003309	F003308	F003307	F005964

Connection Systems

4 - 5 Forge Mills Park, Station Road,
Coleshill, Warwickshire. U.K. B46 1JH

Tel: +44 (0)1675 469 030

www.connectionsystems.co.uk

Connection Systems is a division of Terriva Ltd